

48" x 96" MANHOLE ASSEMBLY

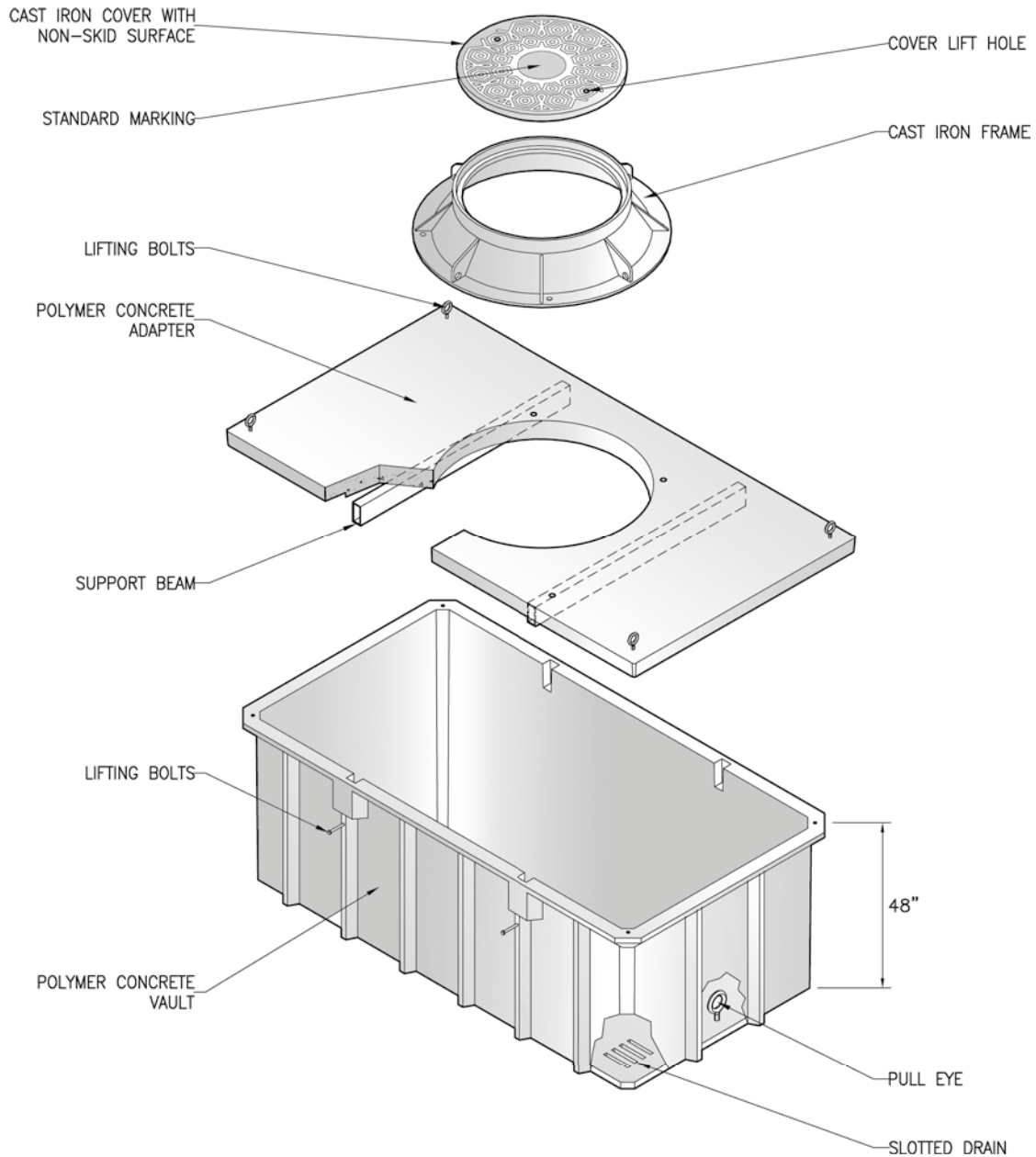
48" DEPTH



POLYMER CONCRETE

ARMORCAST PRODUCTS COMPANY

A6001449H



POLYMER CONCRETE VAULTS & MANHOLE

48"W x 96"L MANHOLE ASSEMBLY Specify Depth Below

DESCRIPTION	NOMINAL SIZE W x L x D	LOAD RATING	ANSI TIER	PART NUMBER	APPROX. WEIGHT	PALLET QTY.
Manhole & Cover Assembly	48" x 96" x 48"	H20	-	A6001449HTAP48B	2995 lbs.	1

- Solid Bottom and includes Cast Iron Ring & Cover
- For sizes not shown please contact Armorcast Products for more information.

www.armorcastprod.com

Tel: (818) 982-3600 Fax: (818) 982-7742



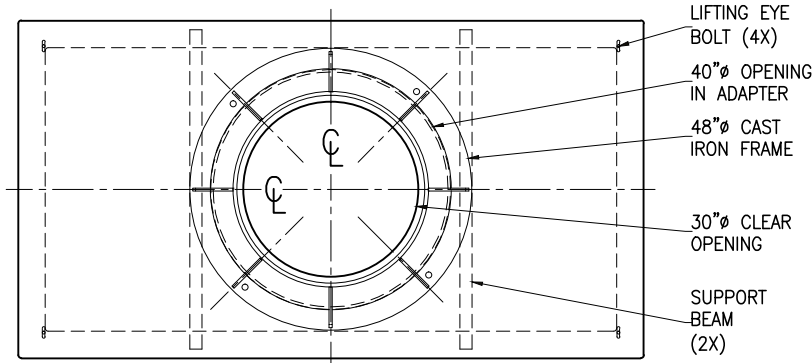
48" x 96" MANHOLE ASSEMBLY

STANDARD DIMENSIONS

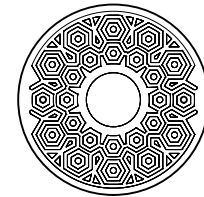
ARMORCAST PRODUCTS COMPANY

POLYMER CONCRETE

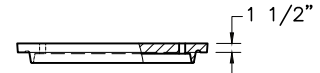
A6001449H



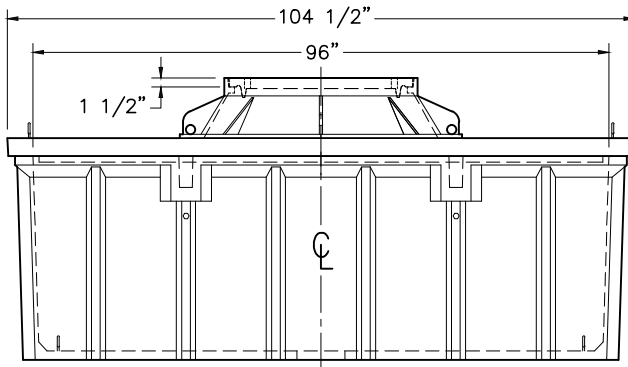
TOP VIEW



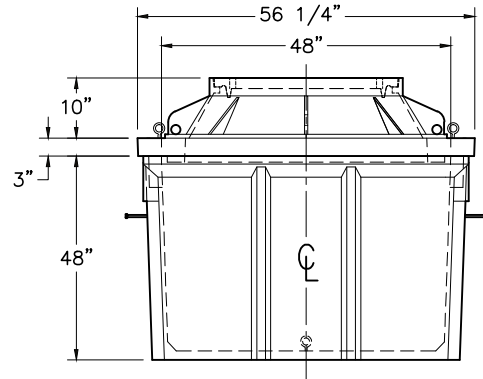
TOP VIEW
 32" C.I. COVER



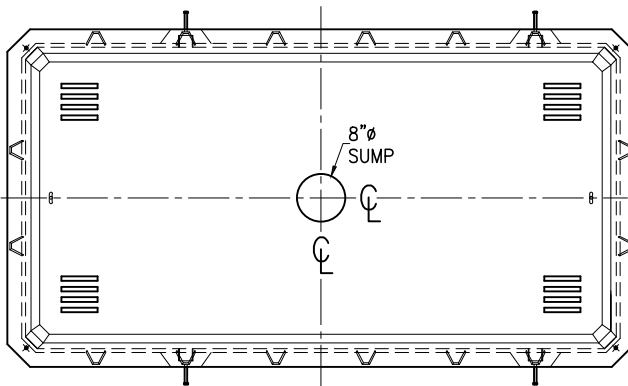
SECTION - C.I. COVER



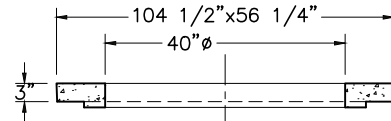
SIDE VIEW



END VIEW



POLYMER CONCRETE MANHOLE
 TOP VIEW



SECTION -
 POLYMER CONCRETE ADAPTER

Armorcast Products Company reserves the right to update or discontinue product information at any time without notice.

www.armorcastprod.com

Tel: (818) 982-3600 Fax: (818) 982-7742

POLYMER CONCRETE
 VAULTS & MANHOLE